



Brochure

Sage 100

Not your typical ERP
A total business
management solution

Sage

 **Ardent**
Consulting

Table of Contents

Page 3

Sage 100: Meeting small and mid-sized business needs

Page 4

Introduction

Page 5

Financials

Page 6

Payroll and Time Track

Page 7

Insights and Reporting

Page 8

Customization and Integration Tools

Page 9

Distribution and Manufacturing

Page 10

Features and Add-Ons

Page 11

Sage Partner Cloud

Page 12

Sage Business Care



Sage 100: Meeting small and mid-sized business needs



Manufacturing



Business Services



Wholesale
and Distribution



Financial Services



Retail



And many more

Introduction

“Sage 100 has been a part of the business for so long that we rarely think about it consciously—it just works. It continues to improve and evolve to meet our needs.”

Rob Perkin

IT Manager Packaging Specialties



To stay competitive, you need your accounting and business productivity software to work as an extension of your team in automating processes and creating single motion workflows. To scale and thrive, you need a business management solution that's extendable and proven to adapt as you grow.

Sage 100 is designed to help small and mid-sized businesses gain accurate insights, meet, and respond to evolving customer demands with ease, all while allowing you to be more productive.

Benefits

- Rise above your competitors.
- Improve customer satisfaction.
- Lower administrative and carrying costs.
- Respond to market opportunities and challenges faster.
- Manage compliance and security with ease.
- Eliminate inefficiencies with automation.

Financials

“Sage 100 is what allows us to follow our margins over time, spotting trends and taking proactive action to maintain and grow our profitability.”

John Giczewski

Purchasing Manager, St. Joseph Paper and Packaging



Sage 100 offers deep functionality and a broad range of features to address your core accounting and financial requirements in a generally accepted accounting principles (GAAP) and international financial reporting standards (IFRS) capable infrastructure. The Sage 100 Financials suite provides core business management functionality for organizations that may only require financials oversight and serves as the basis for more complex operations including distribution and manufacturing. Sage 100 Financials puts you in control of finances so you can grow your business.

Sage 100 Financials

- General Ledger
- Accounts Payables
- Accounts Receivable
- Bank Reconciliation
- Credit Card Processing
- E-Invoicing
- Purchase Order
- Sage Fixed Assets
- Sage Intelligence Reporting

Learn more about [Sage 100 Financials](#).



Payroll and Time Track

Paying people is one of the most crucial functions of any business. But it can also be complex and difficult to scale.

Staying on top of constantly changing federal, state, and local tax legislation is time-consuming and error-prone, which is why many businesses opt-out of doing payroll in-house. But contracting payroll services out to a third-party means sacrificing integration. And a lack of integration with an accounting solution like Sage 100 can carry additional hidden costs like time spent on manual data imports/exports, reporting challenges caused by data silos, and the unnecessary duplication of effort as the same data needs to be entered and re-entered to support different accounting, management, and costing functions.

Sage 100 helps you reduce payroll complexity through automation without sacrificing the efficiency, flexibility, and extensibility of an integrated payroll solution.



Payroll Benefits

- Automate tax table updates and payroll deduction calculations.
- Streamline data entry.
- Track pensions and benefit accrual.
- Manage direct deposits worry free.
- Obtain certified payroll reports with ease.
- Manage W-2 form e-filing.

Time Track Benefits

- Protect sensitive data.
- Track PTO, sick leave, and more.
- Track by job number and cost code with Job Cost.
- Manage overtime.
- Update Job Cost labor without running payroll.
- Automatically collect attendance data

Learn more about [Sage 100 Payroll and Time Track](#) features.

Insights and Reporting

Basic record-keeping is a vital aspect of any well-run business, but more important is visibility into both the daily activities and the ongoing performance of the operations. Making an insight driven environment critical in your ability to plan for the future. With the tools provided in Sage 100, you can satisfy the regulatory and statutory requirements of the business as well as gain the daily oversight required to ensure your business continues to be positioned for success.

Insight and Reporting tools included with Sage 100.

- **Crystal Reports**—Provides presentation-quality output for your custom reports.
- **Sage Intelligence Reporting**—Extracts data from Sage 100 and delivers it in a Microsoft® Excel® format that is easy to understand and manipulate, putting you in control of the design of your reports.
- **Business Insights**
 - **Explorer**—Navigate through data, and preview and drill into related data for the selected row to follow a transaction from beginning to end.
 - **Reporting**—Experience predesigned reports that you quickly can customize to get exactly the information you need.
 - **Dashboard**—Instantly ascertain the state of your business.

Additionally, a few available third-party add-ons can further elevate your Sage 100 solution.

- Sage Alerts and Workflows.
- Sage Data and Analytics.
- Sage Enterprise Intelligence.
- Sage Inventory Advisor.

Learn more about [Sage 100 Insight and Reporting](#) capabilities.



Customization and Integration Tools

“If you compare apples to apples, Sage 100 will beat anything else hands down.”

Kelly Janssens

Co-owner anDea Chocolate and Supplies

To stay competitive, you need your accounting software and business productivity software to work together and offer indispensable functions like graphical reporting, integration, customization, and drill-down functionality. Sage 100 offers several tools to assist you in ensuring you can make your solution work the way you work.

Microsoft® Office Link— Automation and Personalization Simplified

Automatically merge accounting information with Microsoft® Word, Excel®, or Exchange software to quickly create custom documents, messages, and attachments.

Custom Office—Adapt to Your Working Style

With Custom Office, you can change the appearance of your Sage 100 screens to match the way you prefer to work, helping to increase productivity by improving data entry speed and accuracy.



Paperless Office—Sustainable Change

Save time, money, and the environment by using the paperless office capabilities provided to you in Sage 100. Improve communications and save postage by efficiently e-mailing and faxing documents to your customers, prospects, vendors, resellers, and employees in the same office or remote locations.

Visual Integrator—Integrate with Ease

“Open architecture” has been the catch phrase for business application software and databases for years. Businesses have moved beyond the obligation to perform software gymnastics to obtain integrated reporting — these products must work together. To facilitate this process, an industry standard known as open database connectivity (ODBC) was developed.

Learn more about [Sage 100 Customization and Integration Tools](#).

Distribution and Manufacturing

“We do projects on fixed bids, so it’s essential that we have up-to-date information on individual projects costs. With reliable data at our fingertips, we can work smarter and make speedy changes while work is still in progress to maintain profitability.”

Tommy Wall

Office Manager, Narron Construction



Decision Making Driven by Insights and Visibility

Sage 100 distribution and manufacturing modules and features allow you to source, manufacture, and ship more products on time and more profitably than your competitors, positioning you at the head of the pack.

Distribution Synergies

The Sage 100 distribution solution includes a robust assortment of modules and features that work synergistically to provide easy-to-implement and efficient capabilities to track, manage, and replenish inventory. Manage warehouse operations through the entire distribution cycle, from purchasing to stocking, all the way through sales and even merchandise returns—worry free.

Manufacturing Productivity

Sage 100 provides manufacturers with the flexibility and expanded capabilities to meet the diverse business requirements of varied industries, including industrial, automotive, high tech, electronics, consumer packaged goods, and other industries.

One of the advantages of the manufacturing features is its streamlined integration of Bills of Materials and Production Management, which allows for improved lead-time calculations, more accurate material plans, and better resource allocation.

The manufacturing solution optimizes your operations for maximum productivity while it provides a real-time business view into day-to-day activities that afford you the vision to manage profitability with insight.

Learn more about [Sage 100 Distribution and Manufacturing](#) features.



Features and Add-Ons



Financials

- General Ledger
- Accounts Receivable
- Accounts Payable
- Bank Reconciliation
- Credit Processing
- E-Invoicing
- Purchase Order
- Sage Fixed Assets
- Sage Intelligence Reporting



Payroll and Time Track

- Payroll
- Direct Deposit
- Federal and State e-Filing and Reporting
- Job Cost



Customization and Integration

- Microsoft Office Link
- Custom Office
- Paperless Office
- Visual Integrator



Insights and Reporting

- Crystal Reports
- Sage Intelligence Reporting
- Business Insights Explorer, Reporter, and Dashboard
- Sage Alerts and Workflow
- Sage Data and Analytics
- Sage Enterprise Intelligence
- Sage Inventory Advisor



Distribution and Manufacturing

- Inventory Management
- Production Management
- Operations Management
- Kitting
- Lot and Serial Tracking
- Forecasting and Replenishment
- Mobility for Barcode
- Purchasing
- Returns
- Sales Orders
- Shipping
- Capable to Promise
- Bill of Materials

Sage Partner Cloud

If you've been thinking about a cloud option, we have a solution. Sage developed the Sage Partner Cloud—so you can still benefit from the vast suite of in-depth features, cost effectiveness, and adaptability of Sage 100.

You can deploy Sage 100 in the cloud with Microsoft Azure, AWS, or Sage-accredited cloud platforms including ADSS Global, Cloud at Work, CompuData, RKL Solutions, and SWK Technologies.

Still not certain if a move to the cloud is right for you, consider a few benefits:

- Data migration in a single day¹ with no retraining necessary.
- Multi-layered security.
- On-demand scalability.
- Improved operational efficiency.
- Overall reduction of IT costs.
- Flexibility of remote access.
- Sustainability of a carbon-neutral cloud platform.²

Learn how you can deploy Sage 100 in the cloud—[Sage Partner Cloud](#).

1. Estimate is provided by our Sage Partner Cloud Beta Program Partners. In some more complicated cases, data migration may take more than one day.
2. Learn more about Microsoft's sustainability practices [here](#).



Sage Business Care

As quickly as things change in today's global economy, having a peace of mind in knowing that your investment is backed by an organization with financial stability and a reliable record of supporting customers is critical.

With Sage Business Care, you'll gain increased value to help you reduce the time, resources, effort, and cost of operating your Sage 100 solution. Learn how to better protect and extend your investment.



Available Business Care Plans

Silver plan

- Product enhancements and critical updates
- Version upgrades and enhancements
- 24x7 access to the online support knowledgebase
- Sage City peer-to-peer community help
- Five (5) support cases
- 1 user of Sage Intelligence Reporting (Report Manager + Designer Module)
- 1 user for Sage CRM
- Included licenses for DSD / Scanforce Multi-Bin Basics *
- 10% discount on Sage University Anytime Learning courses

Gold plan

- All the benefits of the Silver plan
- Unlimited number of support cases
- Unlimited Anytime Learning courses

Platinum plan

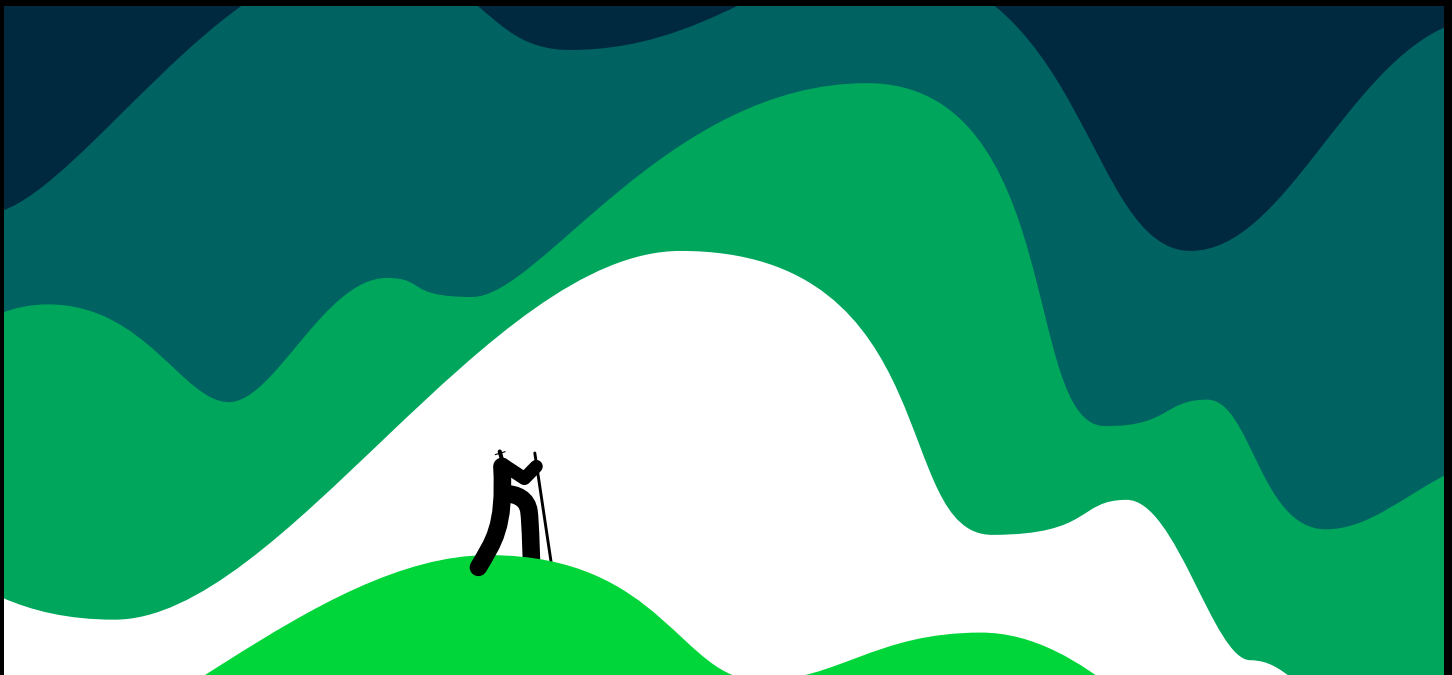
- All the benefits of the Gold plan
- 2 additional users for Sage Intelligence Reporting (Report Manager + Designer Module)
- 2 additional users for Sage CRM

**Available for Sage 100 subscription customers only*



Discover the power of a trusted and reliable solution, designed to help you automate processes, decrease risk, and scale with ease.

Schedule a **Sage 100** demo or contact us at 910.617.4534.





ardentconsulting.com
910-617-4534

Sage

 **Ardent**
Consulting

©2023 The Sage Group plc or its licensors. All rights reserved. Sage, Sage logos, and Sage product and service names mentioned herein are the trademarks of Sage Global Services Limited or its licensors. All other trademarks are the property of their respective owners.